

Precision Drainage Management Value Analysis

Improving Yields and Bottom Line Using Precision Drainage Planning Services

Prepared For:

PGA
 County: Ransom
 Township: Moore
 Section 25
 All Quarter 343.1 Acres

Field Common Name:

Section 25

4 Year Estimated Improved Net Revenue: \$91,410.59

Management Zone Legend

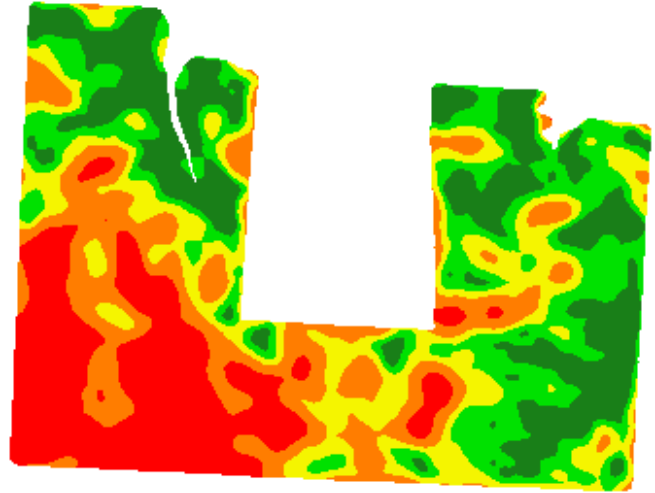
Management Zone Map

Yield **Field Size: 343.1 Acres**

Low		68.6
		66.5
Avg		65.2
		72.2
High		70.7



(701) 364-9175 www.precisionpartners.com



Surface water drainage can be a major factor in influencing crop yields within your field. An effective Precision Water Management Plan that includes highly accurate GPS topographic measurement, mapping, and planning helps growers realize higher yields in areas impacted by standing water and saturated soils. The management zones created in ProfitZ.nutrients is a good source of definition of possible areas affected by water stress.

The Field Drainage Calculator on this page defines possible scenarios of improved drainage. The areas most likely affected by water are colored Red and Orange. Once the size of these areas is calculated a yield estimate is made in percent of average yield before drainage work is done and after drainage work is done. Average yield, estimated yields, and prices are an estimate that can be changed to your specific management conditions.

All Topography maps are created using RTK GPS receivers and delivered in easy to use planning software. Measurements are made in a field survey or can be downloaded from most RTK Auto Steer Systems.

For More information about this service please contact PGAg @ 1-800-950-2219 or email @ travismesser@plainsgrain.com

Field Drainage Calculator

Acres Impacted by Poor Drainage:	135.1
Estimated Yield in Impacted Acres (% of Average):	30%
Target Remediation (% of Average):	60%

Crop Rotation:

	Units (Bu. or Tons)	Sale Price (\$/Bu)
Average Corn Yield	175	\$4.85
Average Soybeans Yield	42	\$10.85
Average Corn Yield	175	\$4.00
Average Soybeans Yield	42	\$8.00

Estimated Improved Yield Profit Resulting from Drainage Plan:

	Corn	Soybeans	Corn	Soybeans
Estimated Field Average Yield Boost (Bu or Tons/Ac)	195.67	46.96	195.67	46.96
Estimated Revenue from Yield Boost (\$/Ac)	\$100.25	\$53.82	\$82.68	\$39.68
Estimated Revenue Increase for Entire Field (\$)	\$34,395.60	\$18,464.27	\$28,367.51	\$13,614.21

Estimated Gross Revenue Increase Across Rotation
 Cost of Drainage Program (@ \$10/Ac)

\$94,841.59
 \$3,431.00

Estimated Improved Net Revenue Across Rotation

\$91,410.59